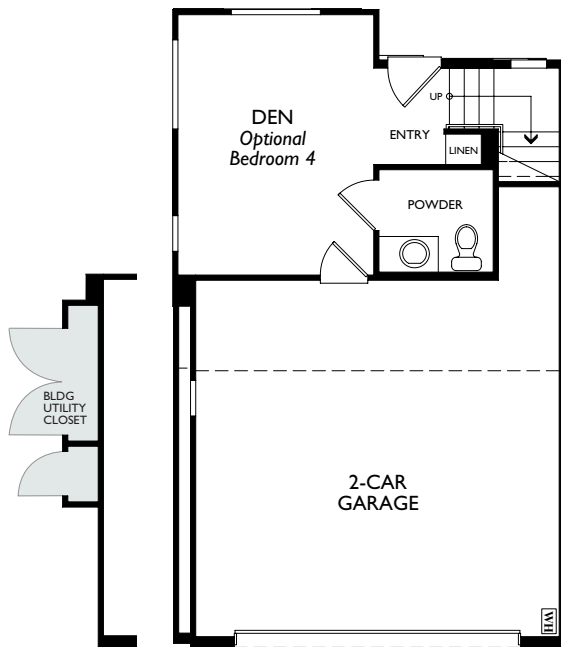


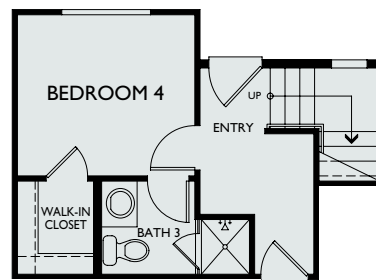
# PLAN 2 B&C

3 Bedroom + Den | 2.5 Baths + Powder Bath | 2 Car Garage | Optional 4th Bedroom | 1,628sq. ft.

## FIRST FLOOR

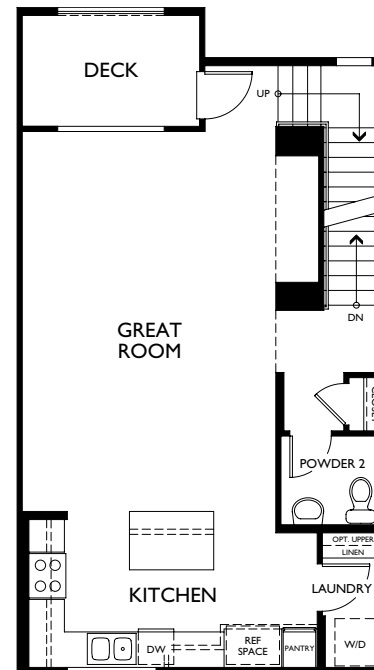


**2B** with Building Utility Closet  
**2C** without Building Utility Closet

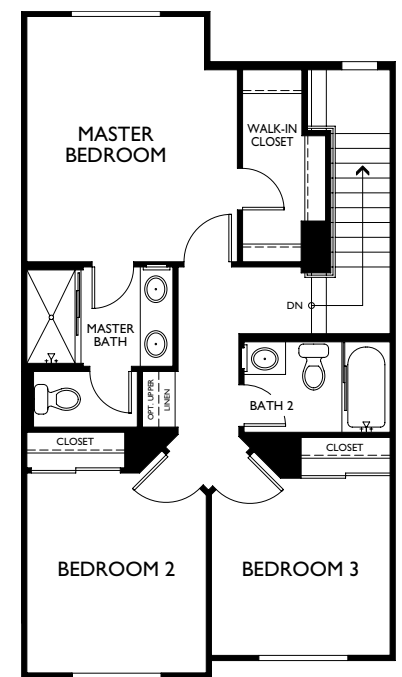


**FIRST FLOOR**  
*Optional Bedroom 4 at Den*

## SECOND FLOOR



## THIRD FLOOR



**BOARDWALK**  
TOWNHOMES

LCG Harrington, LLC reserves the right to make modifications in plans, exterior designs, prices, materials and specifications at any time without notice. All dimensions and square footages are approximate. Plans and dimensions may contain variations from floor to floor. Window sizes and locations vary based upon elevation and placement within individual homes. Maps, photographs, renderings and landscaping are all illustrative and conceptual. Models do not reflect age, gender or racial preference. See sales representative for more information. All loans subject to underwriting approval. Certain restrictions apply. Call for details. Licensed by the Department of Business Oversight under the California Residential Mortgage Lending Act. NMLS3029 ([www.nmlsconsumeraccess.org](http://www.nmlsconsumeraccess.org)). Equal Housing Opportunity.

Sales by CADO Real Estate Group BRE # 01525182

